

DPR series

LOW VOLTAGE BATTEN DPR 2250

The low voltage batten is intended for vertical lighting, it creates strong luminous flux in the form of a curtain. It is especially used for creating "Light Curtains" or as contrejour lighting. It is suitable for medium and large stages. The structural design enables connecting and forming rows of light sources. The batten consists of nine inseparable spotlights with an optical system made of parabolic mirrors. The battens are designed for installing on lighting bridges, lighting batteries, flying light bridges or on rigging equipment.

DPR 2250

ID Nr. 0103004

2250W

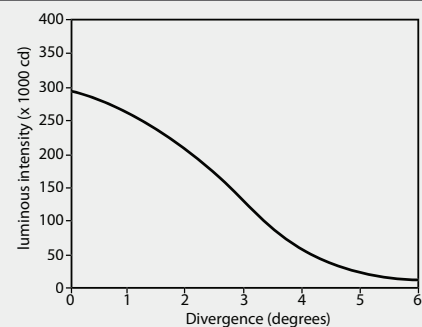


Photometric data

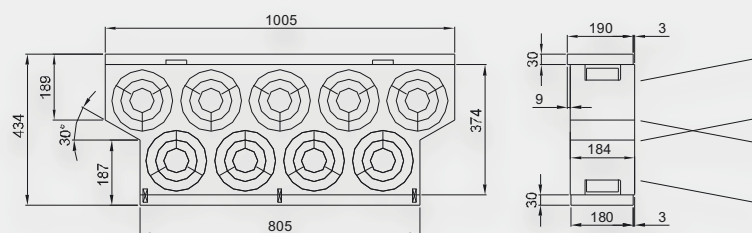
Light source
Base
E40

Light source
special halogen lamp 24V/250W
KV (metal-coated spherical segment of the bulb)

new design of the filament technology – elimination of the interferences by the start of the dimming curve



Dimensions and weight



Weight 23 kg